

Housing Development, Coppenhall Staffordshire



Vertica®

LOCATION:

Staffordshire, England

PRODUCTS USED:

Anchor Vertica®, Paragrid

CONSTRUCTION DATE:

Spring 2005

MAIN CONTRACTOR:

Redfern Developments

DESIGNER

Redfern Developments

THE CHALLENGE

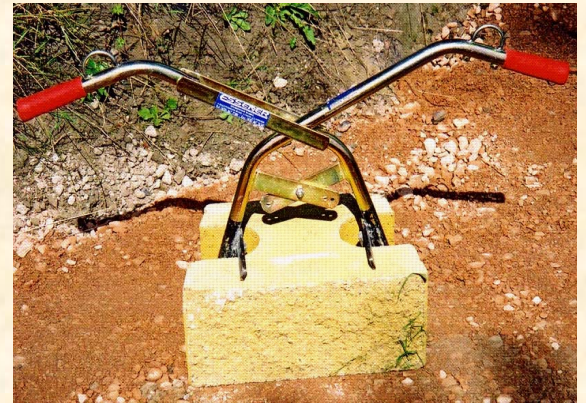
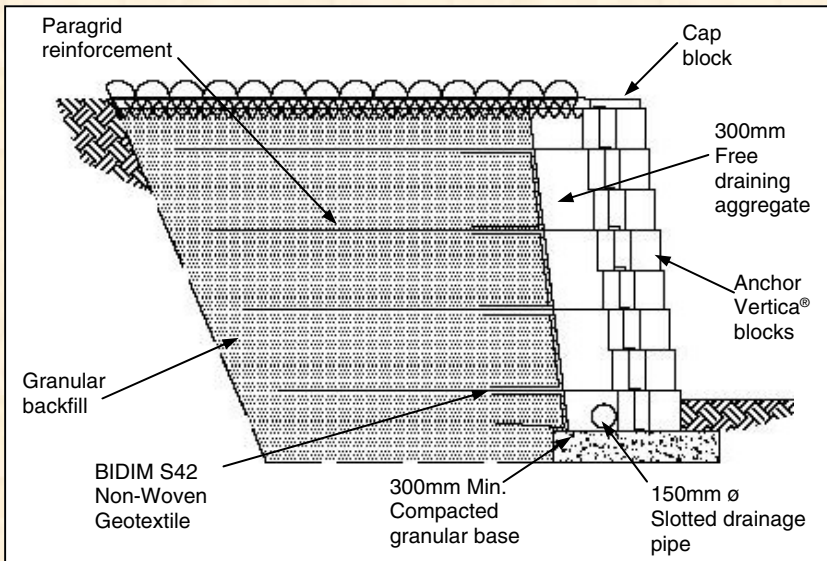
Maccaferri were approached by Redfern Developments to offer an engineered retaining wall solution to provide vehicular access over rising ground on a development of 11 new homes.

In addition, the ability to gently curve the structure to enhance the aesthetics would be an advantage.

THE SOLUTION

The chosen solution was Anchor Vertica®, a segmental engineered retaining wall system. The system comprises a “split face” concrete fascia block with Paragrid 80/15s geogrids and compacted backfill to form a reinforced soil block.

A key consideration for the new homes was to create an elegant curved driveway to the homes.



Top right: Vertica block lifting tool is available for purchase

Right: The completed retaining wall, detailing the curves, capping blocks and fence detail

Constructed on a steep slope, the development comprised eight converted barns leading up to three new town houses built on the site of an old farm house.

Anchor Vertica® blocks were finished in a mellow red colour named 'Brindle' which complemented the old stock bricks used elsewhere on the development, and the gravel driveway.

In addition to providing the design and supply of materials, Maccaferri also provided advice and support during construction of the wall, which was undertaken by Redfern Developments' site workers.

Due to its dry build, "mortarless" construction, and a locator lug and cam on each block, the system is very easy and quick to install; an experienced contractor is not necessarily required

The near vertical 7° face provided by the system maximises land gain behind, and minimises land loss in front of the wall. Additionally, the high quality "split face" concrete block finish can be supplied in a range of colours. As a final detail, a capping block is secured to the top course of blocks with an epoxy adhesive.



Manufacturing & Sales Support by

Acheson GLOVER

THE ACHESON & GLOVER GROUP
Birmingham Tel: 0121 747 0202
Dublin Tel: 01 832 5699
Dungannon Tel: 028 8778 4208
Fivemiletown Tel: 028 8952 1275
www.acheson-glover.com

www.anchorwall.co.uk